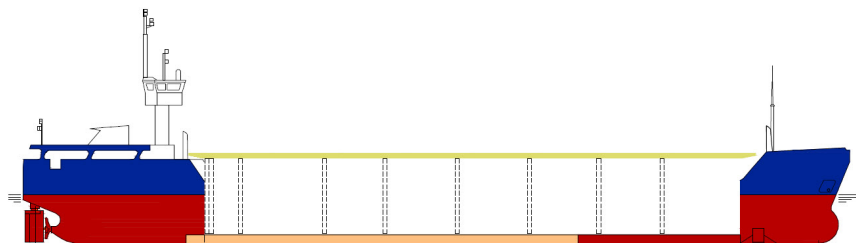


## SHIPS PARTICULARS

## MV MAREMKA



Callsign		ONIN	Port of Registry	Antwerp	Flag	Belgian
IMO number		9137301	Official No	KV 431	MMSI Number	205688000

SHIP SPECIFICATION			
Type of vessel	General Dry Cargo Ship – multipurpose single deck – single hold – steel floored box shaped – one cargo-hold grain fitted - two moveable bulkheads		
Builder	Slovenske Lodenice A.S. 94525 Komarno, Slovakia Republic	Year of delivery	1996
Operating area	Europe, N.Africa, Mediterranean	Service Speed	9.5 knots
Class. Society	Rina Class	P & I	NNPC
Hull & Machinery	BDM		

TONNAGE		DRAFTS	
Gross tonnage	1864	Summer	4,811 m
Net tonnage	938	Winter	4.71 m
Summer Deadweight	2507	Summer freeboard	1.31 m
Summer displacement	3647	Winter Deadweight	2415
DWCC Summer / Winter	2400 / 2300	Keel to highest fixed point	23 m
Light ship	1146.46	Air draft in full ballast condition	20 m mast up / 14 m mast down

DIMENSIONS			
Length over all	82,42 m	Cargo hold dimension	52.50 m x 9,00 m x 7,55 m
Length between perp.	79,82 m	Hatch Cover Type	Kvaerner Multi-fold crocodile
Breadth moulded	11.35 m	Box opening hatch	52.50 m
Breadth Extreme	11.40 m	Box opening hatch –storage bulkheads	51,8m
Depth (moulded)	6,10 m	Hatch Dimensions (L x B)	52,50 x 9,00 m
SWL Tanktop	13.0 T/m <sup>2</sup>	Hold capacity grain	3485 m <sup>3</sup> / 123091 cbf
SWL Hatch cover	1.32 T/ m <sup>2</sup>	Containers 20' (hold/hatch)	69 TEU (hold) – 36 TEU (deck)
Distance from waterline to top of hatch coaming in full ballast condition			5,82 m

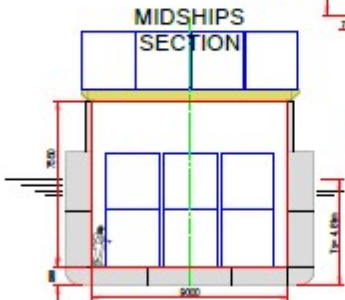
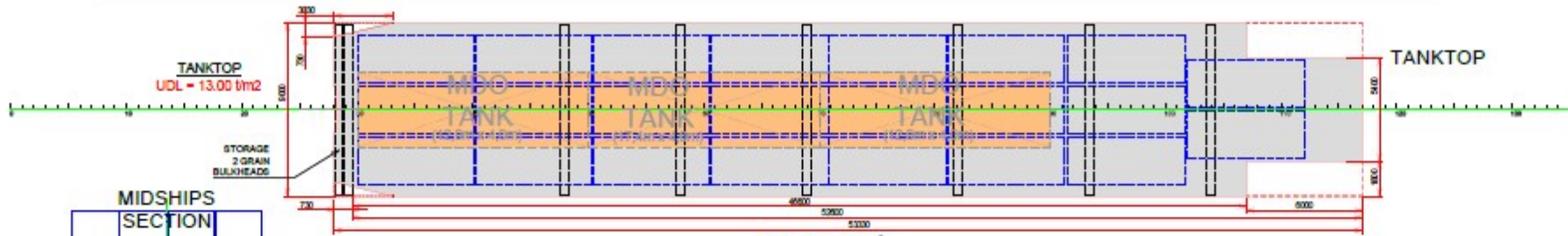
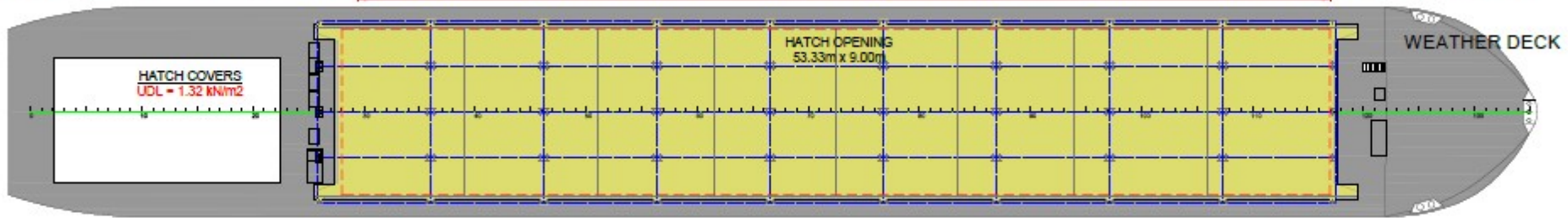
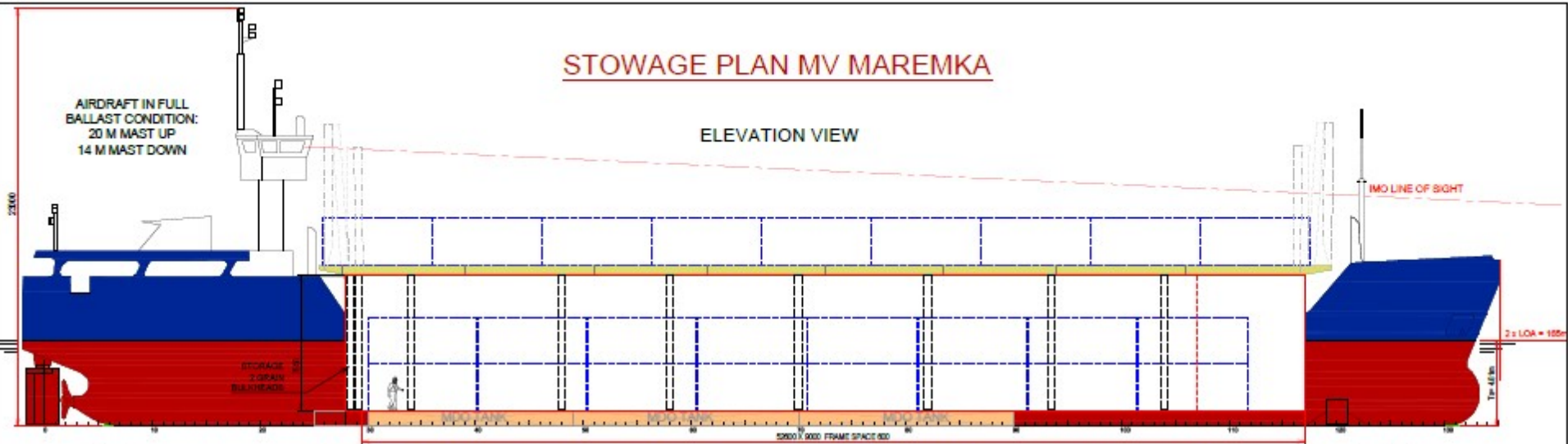
TECHNICAL SPECIFICATIONS	
Main Engine	Deutz MWM SBV 8 M 628 800 RPM - 1350kW
Bow thruster	Omega Jet K4 @ 255 kW
Fuel	MDO
Electrical Ventilation	YES: 5 times/hour change of air at 26600 m3 / hour.
IMO Fitted	YES – various classes

TANK CAPACITY	
Ballast Water	1059.11 m <sup>3</sup>
Gas oil	118.29 m <sup>3</sup>
Fresh Water	23.40 m <sup>3</sup>



# STOWAGE PLAN MV MAREMKA

## ELEVATION VIEW



**NOTE:**  
DISTANCE FROM WATERLINE  
TO TOP OF HATCHCOAMING  
IN FULL BALLAST CONDITION:  
**5.82 M**

PRINCIPAL PARTICULARS	
Length Overall	85.41 m
Length Deck	79.80 m
Deck Length	41.35 m
Deck Width	9.48 m
Summer draft	4.81 m
Winter draft	4.71 m
Summer weight displacement	2,581 (2,415) t
Winter weight displacement	2,400 (2,200) t
Deadweight Capacity	3,498 t
Container Capacity On Deck	36 TEU
at Hold	36 TEU
Total	72 TEU
Main Engine	MAN B&W 6S70MC-C (3000 rpm)
Service Engine	3.0 MW
Down-Roller	300 mm
Electrical System	6.6 kV 50 Hz
IMO MMSI	YES - Various Countries
IMO Number	NO
IMO Call Sign	4-32100

All details given in good faith and believed to be correct, but without guarantee



[www.boeckmans.be](http://www.boeckmans.be)