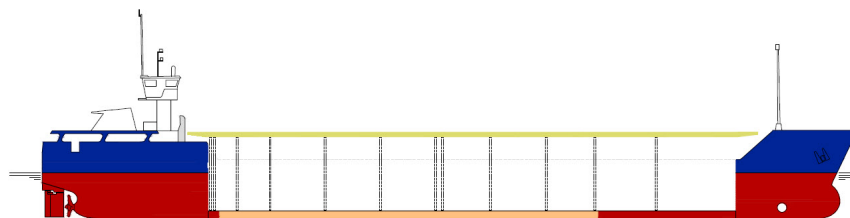


## SHIPS PARTICULARS

## MV MARLEY



Callsign	ONHT	Port of Registry	Antwerp	Flag	Belgian
IMO number	9116814	Official No	4948	MMSI Number	205656000

## SHIP SPECIFICATION

Type of vessel	General Dry Cargo Ship – multipurpose single deck box shaped – one hold grain fitted - two moveable bulkheads – steel floored		
Builder	Slovenske Lodenice A.S. 94525 Komarno, Slovakia Republic	Year of delivery	June 1995
Operating area	Europe, N.Africa, Mediterranean	Service Speed	9,5 knots
Class. Society	Rina Class	P & I	CARINA
Hull & Machinery	BDM		

## TONNAGE

## DRAFTS

Gross tonnage	2061	Summer	4, 950 m
Net tonnage	1161	Winter	4, 840 m
Summer Deadweight	3001	Summer freeboard	1, 466 m
Summer displacement	2903	Air draft in full ballast cond.:	10,5 m (bridge down) / 15,5 (bridge up) / 20 m (mast up)
DWCC Summer / Winter	2900 / 2800	Keel to highest fixed point	23 m
Light ship	1089, 17		

## DIMENSIONS

Length over all	88, 48 m	Cargo hold dimension	57.50 m x 9,01 m x 8,06 m
Length between perp.	84, 68 m	Hatch Cover Type	Kvaerner Multi-fold crocodile
Breadth moulded	11, 35 m	Box opening hatch	57, 50 m
Breadth Extreme	11, 402 m	Box opening hatch –storage bulkheads	56, 60 m
Depth (moulded)	6, 42 m	Hatch Dimensions (L x B)	1 hatch 57,50 x 9.,00 m
SWL Tanktop	12,0 T/m <sup>2</sup>	Hold capacity grain/bale	4090 m <sup>3</sup> / 144,400 cbf
SWL Hatch cover	1,2 T/ m <sup>2</sup>	Containers 20' (hold/hatch)	78/40
Distance from waterline to top of hatch coaming in full ballast conditions			5,85 m

## TECHNICAL SPECIFICATIONS

Main Engine	1 x Deutz MWM SBV 8 M 628 - 1.125kW
Bowthruster	175 KW
Fuel	MGO
Electrical Ventilation	YES – 6 airchanges/hour
IMO Fitted	YES – various classes

## TANK CAPACITY

Ballast Water	1181, 00 m <sup>3</sup>
Gas oil	135, 00 m <sup>3</sup>
Fresh Water	23, 00 m <sup>3</sup>



chartering@boeckmans.be