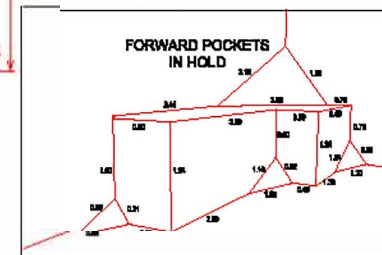
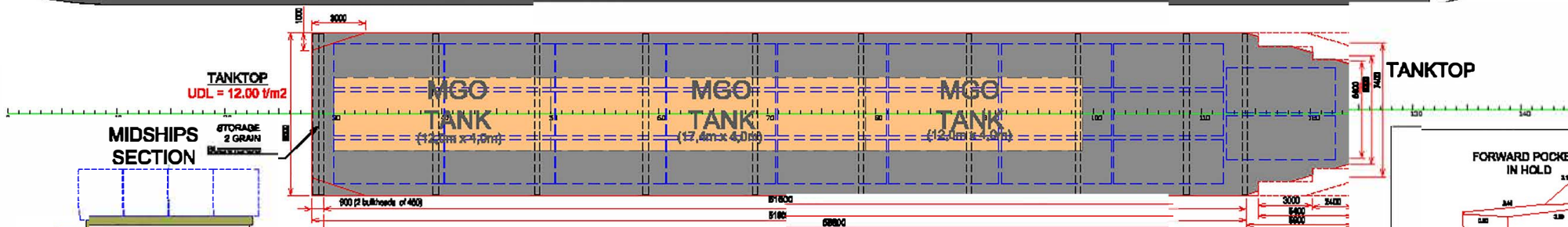
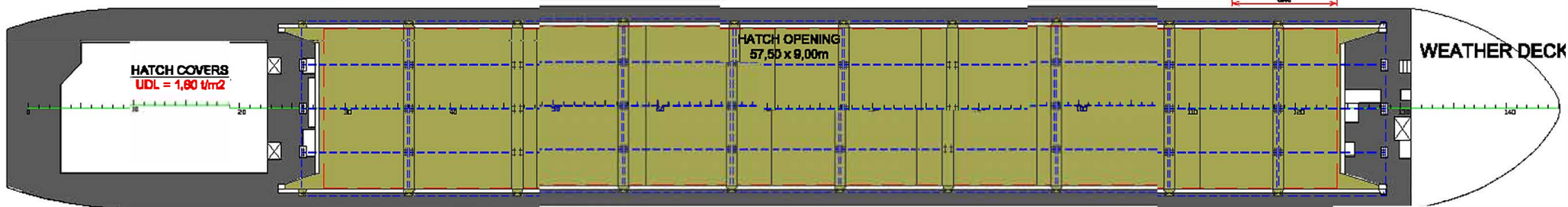
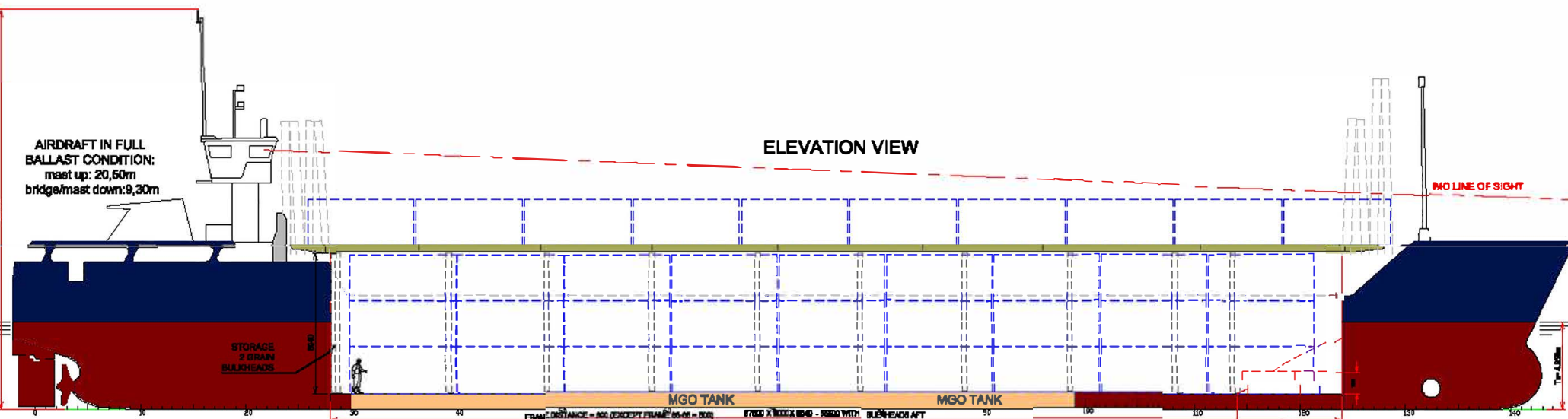


# STOWAGE PLAN MV MARIE

ELEVATION VIEW

AIRDRAFT IN FULL BALLAST CONDITION:  
mast up: 20,60m  
bridge/mast down: 9,30m



**NOTE:**

DISTANCE FROM WATERLINE TO TOP OF HATCH-COAMING IN FULL BALLAST CONDITION:

**5,85 M**

**PRINCIPAL PARTICULARS**

|                            |                       |                               |                       |
|----------------------------|-----------------------|-------------------------------|-----------------------|
| LENGTH O.A.                | 88.48 m               | MAIN ENGINE DEUTZ MWM SBV662B | 1.125 kW              |
| LENGTH B.P.                | 84.68 m               | BOWTHRUSTER                   | 130 kW                |
| BREADTH MLD.               | 11.35 m               | ELECTRICAL VENTILATION        | 6 AIRCHANGES/HR       |
| DEPTH MLD.                 | 6.42 m                | IMO FITTED                    | YES - VARIOUS CLASSES |
| SUMMER DRAFT               | 4.956 m               | SERVICE SPEED                 | 9.5 kn                |
| WINTER DRAFT               | 4.861 m               | MAX UNIFORM LOAD:             |                       |
| DEADWEIGHT AT SUMMER DRAFT | 2,974 t               | TANKTOP:                      | 12 t/m²               |
| DWCC SUMMER/WINTER         | 2,832 / 2,732 t       | HATCH COVERS:                 | 1.6 t/m²              |
| HOLD CAPACITY GRAIN/BALB.  | 162 m³ / 146,869 cbft |                               |                       |
| CONTAINER CAPACITY DECK    | 48 TEU                |                               |                       |
| IN HOLD                    | 78 TEU                |                               |                       |
| TOTAL                      | 126 TEU               |                               |                       |

