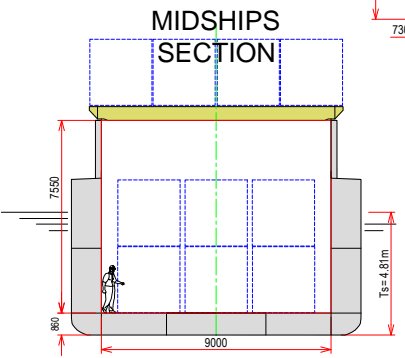
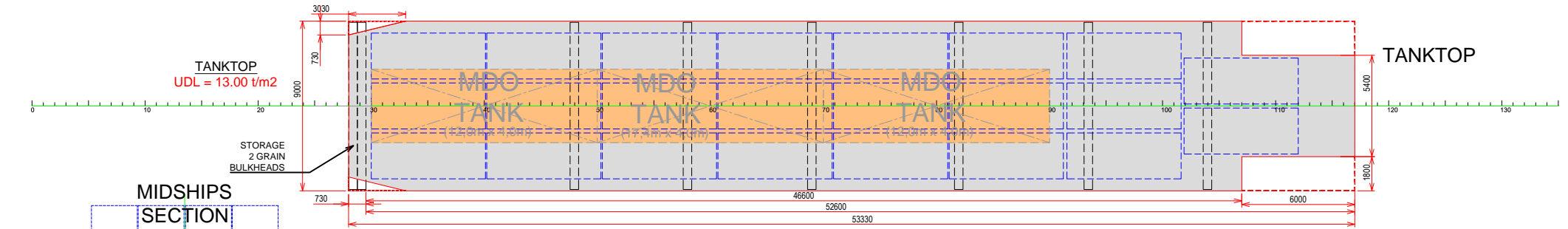
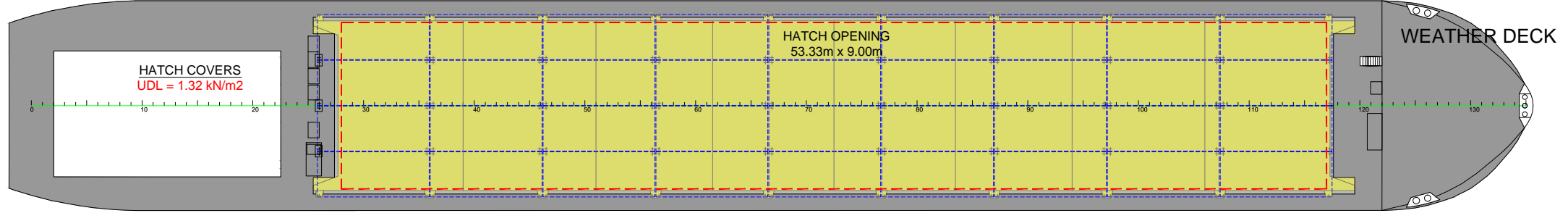
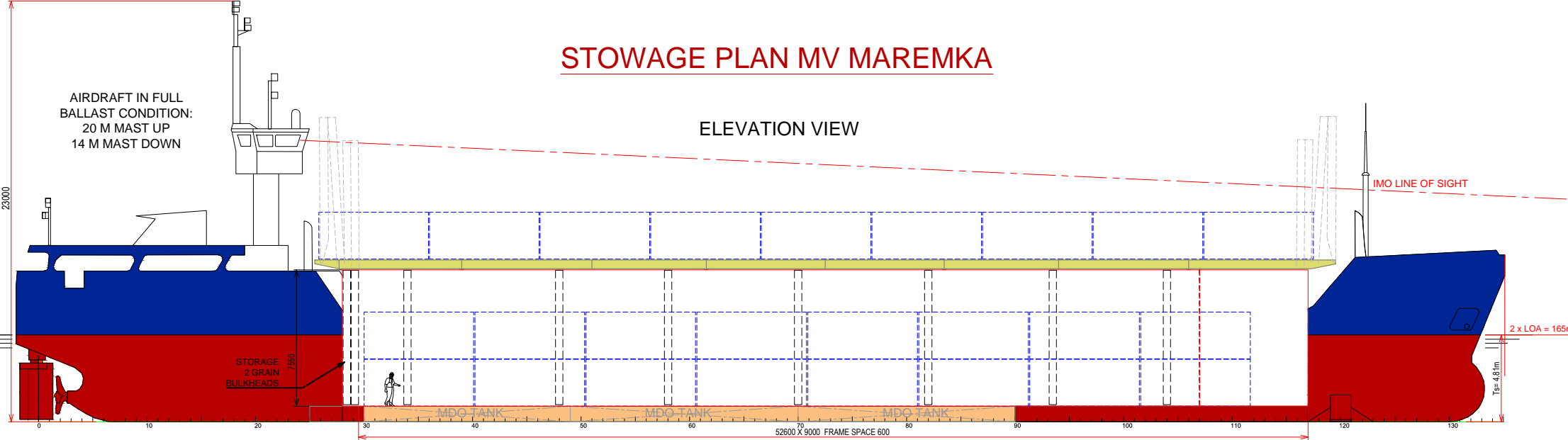


# STOWAGE PLAN MV MAREMKA

## ELEVATION VIEW

AIRDRAFT IN FULL BALLAST CONDITION:  
20 M MAST UP  
14 M MAST DOWN



**NOTE:**  
DISTANCE FROM WATERLINE TO TOP OF HATCHCOAMING IN FULL BALLAST CONDITION:  
**5.82 M**

### PRINCIPAL PARTICULARS

LENGTH O.A.	82.42 m	MAIN ENGINE	Deutz MWM SBV8M628-1.350Kw(MDO)
LENGTH B.P.	79.82 m	SERVICE SPEED	9.5 kn
BREADTH MLD.	11.35 m	BOWTHRUSTER	255 KW
DEPTH MLD.	6.10 m	ELECTRICAL VENTILATION	5 AIRCHANGES/HR
SUMMER DRAFT	4.81 m	IMO FITTED	YES - VARIOUS CLASSES
WINTER DRAFT	4.71 m	MAX UNIFORM LOAD:	
SUMMER/WINTER DEADWEIGHT	2.507 t / 2.415 t	TANKTOP:	13 t/m²
DWCC SUMMER/WINTER	2.400 t / 2.300 t	HATCH COVERS:	1.32 t/m²
HOLD CAPACITY GRAIN	3.485 m³		
CONTAINER CAPACITY: ON DECK	39 TEU		
IN HOLD	69 TEU		
TOTAL	108 TEU		

All details given in good faith and believed to be correct, but without guarantee



www.boeckmans.be