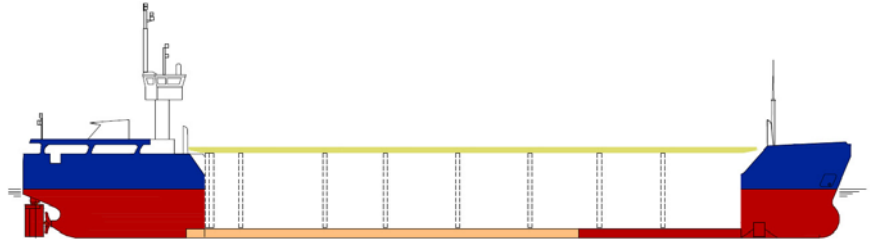


SHIPS PARTICULARS

MV MAREMKA



Callsign		ONIN	Port of Registry	Antwerp	Flag	Belgian
IMO number		9137301	Official No	KV 431	MMSI Number	205688000

SHIP SPECIFICATION			
Type of vessel	General Dry Cargo Ship – multipurpose single deck – single hold – steel floored box shaped – one cargo-hold grain fitted - two moveable bulkheads		
Builder	Slovenske Lodenice A.S. 94525 Komarno, Slovakia Republic	Year of delivery	1996
Operating area	Europe, N.Africa, Mediterranean	Service Speed	9.5 knots
Class. Society	Rina Class	P & I	CARINA P&I
Hull & Machinery	BDM		

TONNAGE		DRAFTS	
Gross tonnage	1864	Summer	4,811 m
Net tonnage	938	Winter	4.71 m
Summer Deadweight	2507	Summer freeboard	1.31 m
Summer displacement	3647	Winter Deadweight	2415
DWCC Summer / Winter	2400 / 2300	Keel to highest fixed point	23 m
Light ship	1145	Air draft in full ballast condition	20 m mast up / 14 m mast down

DIMENSIONS			
Length over all	82,42 m	Cargo hold dimension	52.50 m x 9,00 m x 7,55 m
Length between perp.	79,82 m	Hatch Cover Type	Kvaerner Multi-fold crocodile
Breadth moulded	11.35 m	Box opening hatch	52.50 m
Breadth Extreme	11.40 m	Box opening hatch –storage bulkheads	51,8m
Depth (moulded)	6,10 m	Hatch Dimensions (L x B)	52,50 x 9,00 m
SWL Tanktop	13.0 T/m ²	Hold capacity grain	3485 m ³ / 123091 cbf
SWL Hatch cover	1.32 T/ m ²	Containers 20' (hold/hatch)	69 TEU (hold) – 36 TEU (deck)

TECHNICAL SPECIFICATIONS	
Main Engine	Deutz MWM SBV 8 M 628 800 RPM - 1350kW
Bowthruster	Omega Jet K4 @ 255 kW
Fuel	MDO
Electrical Ventilation	YES: 5 times/hour change of air at 26600 m3 / hour.
IMO Fitted	YES – various classes

TANK CAPACITY	
Ballast Water	1059.11 m ³
Gas oil	118.29 m ³
Fresh Water	23.40 m ³



chartering@boeckmans.be

All details given in good faith and believed to be correct, but without guarantee