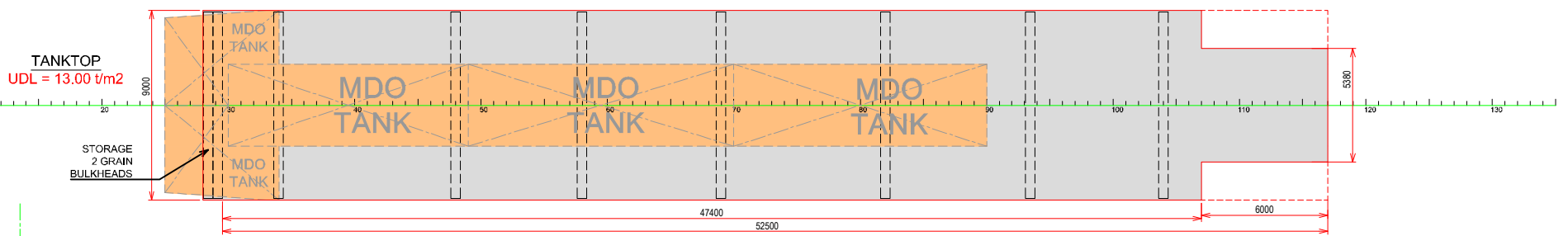
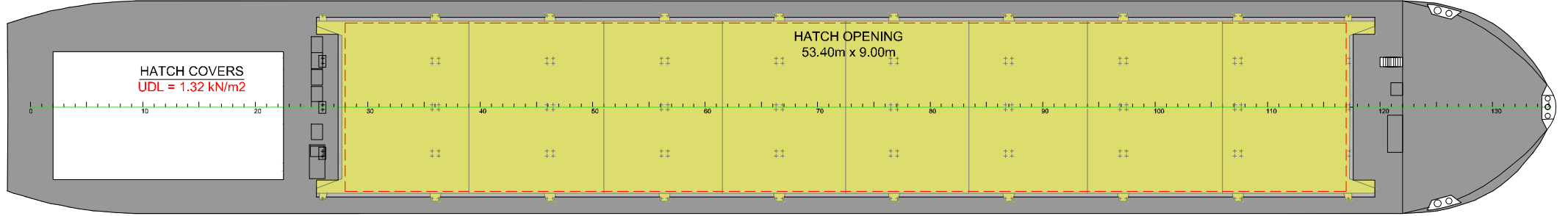
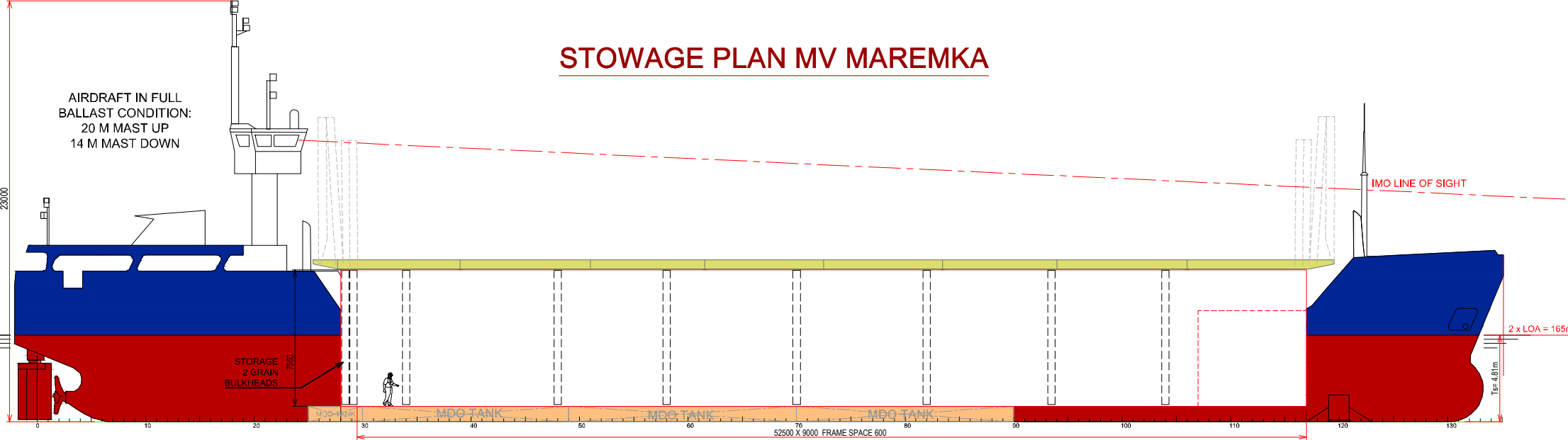


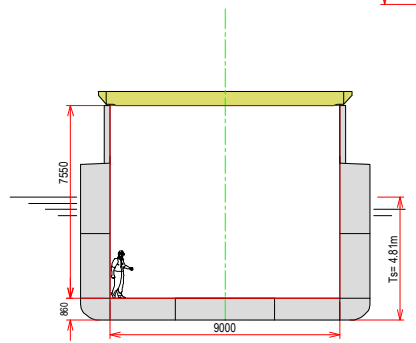
# STOWAGE PLAN MV MAREMKA

AIRDRAFT IN FULL BALLAST CONDITION:  
20 M MAST UP  
14 M MAST DOWN



## PRINCIPAL PARTICULARS

LENGTH O.A.	82.42 m.	MAIN ENGINE	Deutz MWM SBV 8M628 - 1.350 Kw (MDO)
LENGTH B.P.	79.82 m.	SERVICE SPEED	9.5 kn
BREADTH M.L.D.	11.35 m.	BOWTHRUSTER	255 kW
DEPTH M.L.D.	6.10 m.	ELECTRICAL VENTILATION	5 AIRCHANGES/HR
SUMMER DRAFT	4.81 m.	IMO FITTED	YES - VARIOUS CLASSES
WINTER DRAFT	4.71 m.	MAX UNIFORM LOAD:	
SUMMER/WINTER DEADWEIGHT	2.507 t / 2.415 t.	TANKTOP:	13 t/m <sup>2</sup>
DWCC SUMMER/WINTER	2.400 t / 2.300 t.	HATCH COVERS:	1.32 t/m <sup>2</sup>
HOLD CAPACITY GRAIN	3.485 m <sup>3</sup> .		
CONTAINER CAPACITY: ON DECK	39 TEU.		
IN HOLD	69 TEU.		
TOTAL	108 TEU.		



[www.boeckmans.be](http://www.boeckmans.be)

All details given in good faith and believed to be correct, but without guarantee